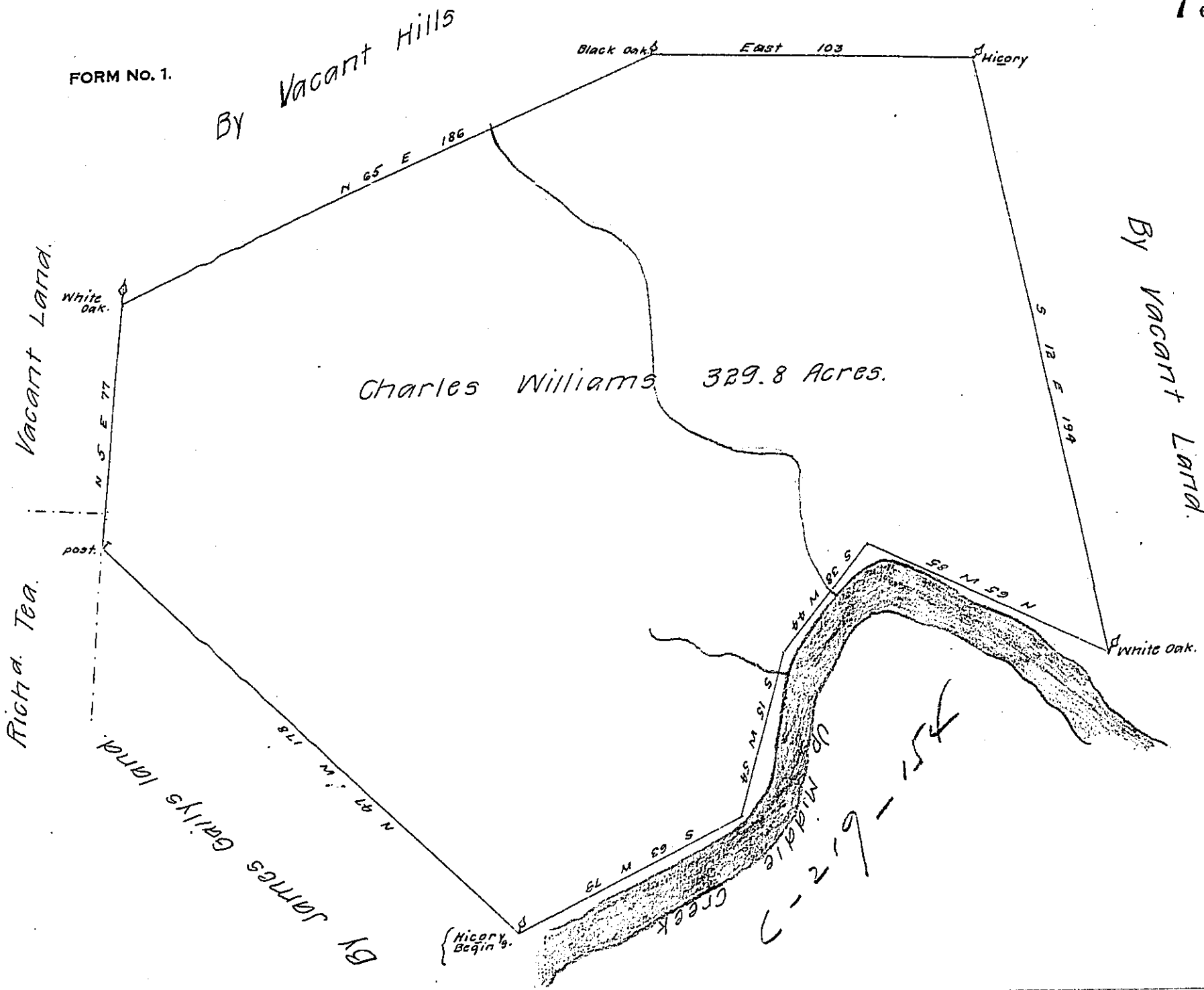


FORM NO. 1.



The Draught of a tract of land situate on Middle Creek and on a run call'd Spring run in the County of Cumberland containing three hundred twenty nine acres and one hundred and fifty perches with the usual Allow^{ce}. of six acres P Cent for roads &c^a. Survey'd September 19th AD. 1765 for Charles Williams in pursuance of a Warrant from the Hon^{ble} the Proprietaries Bearing Date at Philad^a. the 5th Day of March 1755.

P- Wm. Maclay Depty. Surv^r.

To John Lukens Esq^r. Surv^r. Gen^l.
of the Province of Pennsylvania
now Penns to P. North^a.

IN TESTIMONY that the above is a copy of the original remaining on file in the Department of Internal Affairs of Pennsylvania, made conformably to an Act of Assembly approved the 16th day of February 1833, I have hereunto set my hand and caused the Seal of said Department to be affixed at Harrisburg, this eighteenth day of June 1907.

Henry Howell
Secretary of Internal Affairs.